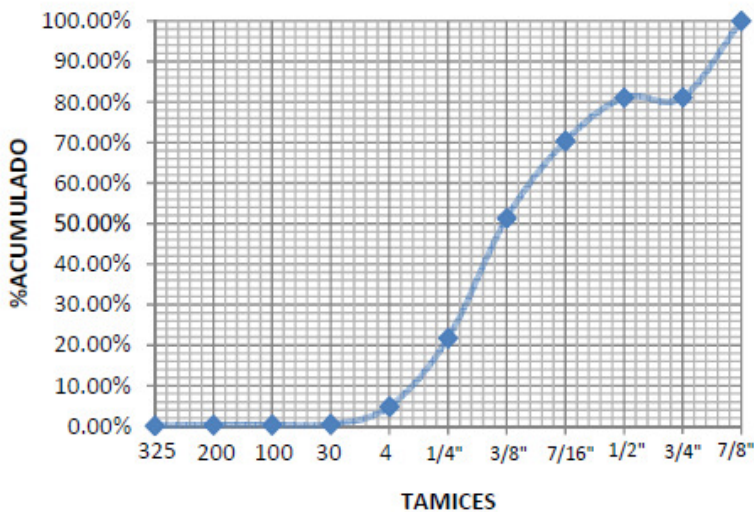


MATERIAL	GRAVA 93	% CaCO ₃	93.00%		
TAMAÑO	1 A 1/2"	% SiO ₂	2.00%		
PROCEDENCIA	BANCO CALERAS BERTRAN	IMPUREZAS	5.00%		
CARACTERISTICAS FISICAS		GRANULOMETRIA SIMPLIFICADA			
MASA VOL SUELTA SECA	1342.2	ROCAS	MAYORES A 75 mm		%
MASA VOL MAXIMA SECA	---	GRUESA	19 a75 mm	18.83	%
CONTENIDO DE AGUA OPTIMO	---	MEDIANA	4.75mm a 19 mm	76.32	%
EXPANSIÓN	---	FINA	0.425mm a 4.75mm	4.49	%
VALOR RELATIVO DE SOPORTE (VRS)	---	LIMOS	0.075mm a 0.425mm	0.23	%
CAS	471-34-1	ARCILLAS	menores a 0.075mm	0.13	%

CURVA GRANULOMETRICA


MALLA	% RETENIDO	% PASA
7/8"	18.83%	100.00%
3/4"	0.08%	81.17%
1/2"	10.70%	81.09%
7/16"	19.03%	70.40%
3/8"	29.64%	51.36%
1/4"	16.87%	21.73%
4	4.36%	4.86%
30	0.13%	0.49%
100	0.05%	0.36%
200	0.18%	0.31%
325	0.13%	0.13%

Realizado bajo NMX-C-416-ONNCCE-2003